

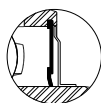
UCST 200 SERIES

Normal-Duty Ball Take-up Unit Setscrew Lock

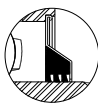
TURNER

Mounted Bearings

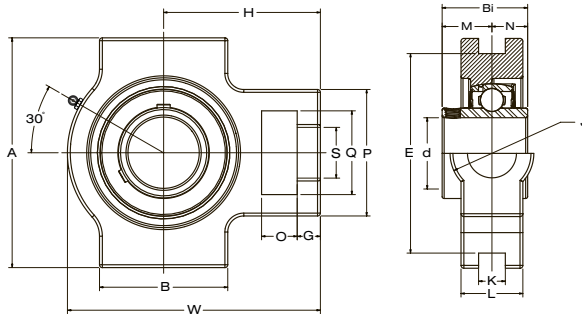
Available Seal Styles:



Standard



L3



Bearing Number	Shaft Dia. d in. mm.	Dimensions in. mm.														Load Rating lbs. kN.		Bearing Insert	Housing Number	Weight lbs. kg.				
		O	G	P	Q	S	B	K	E	A	W	J	L	H	Bi	N	M				Dynamic C _r	Static C _{0r}		
UCST 201	12																					ST 204	UC 201	1.5 0.7
UCST 201-8	1/2																						UC 201-8	
UCST 202	15	0.63	0.39	2.00	1.25	0.75	2.00	0.53	3.00	3.50	3.69	1.25	0.84	2.38	1.2205	0.5000	0.7205	2,883	1,496				UC 202	
UCST 202-10	5/8	16.0	10.0	51.0	32.0	19.0	51.0	13.5	76.2	89.0	94.0	32.0	21.0	60.0	31.0	12.7	18.3	12.82	6.65				UC 202-10	
UCST 203	17																						UC 203	
UCST 204-12	3/4																						UC 204-12	
UCST 204	20																						UC 204	
UCST 205-14	7/8																						ST 205	
UCST 205-15	15/16	0.63	0.39	2.00	1.25	0.75	2.00	0.53	3.00	3.50	3.84	1.25	0.94	2.44	1.3425	0.5630	0.7795	3,155	1,810			UC 205-15		
UCST 205	25	16.0	10.0	51.0	32.0	19.0	51.0	13.5	76.2	89.0	97.0	32.0	24.0	62.0	34.1	14.3	19.8	14.04	8.05			UC 205		
UCST 205-16	1																					UC 205-16		
UCST 206-17	1 1/16																					ST 206		UC 206-17
UCST 206-18	1 1/8	0.63	0.39	2.19	1.47	0.88	2.25	0.53	3.50	4.00	4.44	1.47	1.13	2.75	1.5000	0.6260	0.8740	4,377	2,569				UC 206-18	
UCST 206	30	16.0	10.0	56.0	37.0	22.0	57.0	13.5	89.0	102.0	113.0	37.0	28.0	70.0	38.1	15.9	22.2	19.47	11.43				UC 206	
UCST 206-19	1 3/16																						UC 206-19	
UCST 206-20	1 1/4																						UC 206-20	
UCST 207-20	1 1/4																					ST 207	UC 207-20	3.5 1.6
UCST 207-21	1 5/16	0.63	0.50	2.50	1.47	0.88	2.50	0.53	3.50	4.00	5.06	1.47	1.19	3.06	1.6890	0.6890	1.0000	5,775	3,497				UC 207-21	
UCST 207-22	1 3/8	16.0	13.0	64.0	37.0	22.0	64.0	13.5	89.0	102.0	129.0	37.0	30.0	78.0	42.9	17.5	25.4	25.69	15.56				UC 207-22	
UCST 207	35																						UC 207	
UCST 207-23	1 7/16																						UC 207-23	
UCST 208-24	1 1/2	0.75	0.63	3.25	1.94	1.13	3.25	0.69	4.00	4.50	5.69	1.94	1.31	3.50	1.9370	0.7480	1.1890	6,634	4,079			ST 208	UC 208-24	5.5 2.5
UCST 208-25	1 9/16																						UC 208-25	
UCST 208	40	19.0	16.0	83.0	49.0	29.0	83.0	17.5	101.6	114.0	144.0	49.0	33.0	89.0	49.2	19.0	30.2	29.51	18.14				UC 208	
UCST 209-26	1 5/8																					ST 209	UC 209-26	5.5 2.5
UCST 209-27	1 11/16	0.75	0.63	3.25	1.94	1.13	3.25	0.69	4.00	4.63	5.69	1.94	1.38	3.44	1.9370	0.7480	1.1890	7,160	4,676				UC 209-27	
UCST 209-28	1 3/4	19.0	16.0	83.0	49.0	29.0	83.0	17.5	101.6	117.0	144.0	49.0	35.0	87.0	49.2	19.0	30.2	31.85	20.80				UC 209-28	
UCST 209	45																						UC 209	
UCST 210-30	1 7/8																						ST 210	
UCST 210-31	1 15/16	0.75	0.63	3.25	1.94	1.13	3.38	0.69	4.00	4.63	5.88	1.94	1.47	3.56	2.0315	0.7480	1.2835	7,867	5,330			UC 210-31		
UCST 210	50	19.0	16.0	83.0	49.0	29.0	86.0	17.5	101.6	117.0	149.0	49.0	37.0	90.0	51.6	19.0	32.6	35.00	23.71			UC 210		
UCST 210-32	2																					UC 210-32		
UCST 211-32	2																					ST 211		UC 211-32
UCST 211-34	2 1/8	0.98	0.75	4.00	2.50	1.38	3.75	1.06	5.13	5.75	6.75	2.50	1.50	4.18	2.1890	0.8740	1.3150	9,743	6,608				UC 211-34	
UCST 211	55	25.0	19.0	102.0	64.0	35.0	95.0	27.0	130.0	146.0	171.0	64.0	38.0	106.0	55.6	22.2	33.4	43.34	29.40				UC 211	
UCST 211-35	2 3/16																						UC 211-35	
UCST 212-36	2 1/4																						ST 212	UC 212-36
UCST 212	60	1.25	0.75	4.00	2.50	1.38	4.00	1.06	5.13	5.75	7.63	2.50	1.65	4.69	2.5630	1.0000	1.5630	10,720	7,516			UC 212		
UCST 212-38	2 3/8	32.0	19.0	102.0	64.0	35.0	102.0	27.0	130.0	146.0	194.0	64.0	42.0	119.0	65.1	25.4	39.7	47.69	33.43			UC 212-38		
UCST 212-39	2 7/16																					UC 212-39		
UCST 213-40	2 1/2	1.25	0.81	4.38	2.75	1.63	4.75	1.06	5.94	6.56	8.83	2.75	1.75	5.38	2.5630	1.0000	1.5630	12,859	8,994			ST 213		UC 213-40
UCST 213	65	32.0	21.0	111.0	70.0	41.0	121.0	27.0	151.0	167.0	224.0	70.0	44.0	137.0	65.1	25.4	39.7	57.20	40.01				UC 213	
UCST 214-43	2 11/16																					ST 214	UC 214-43	15.6 7.1
UCST 214-44	2 3/4	1.25	0.81	4.38	2.75	1.63	4.75	1.06	5.94	6.56	8.83	2.75	1.81	5.38	2.9370	1.1890	1.7480	13,981	9,869				UC 214-44	
UCST 214	70	32.0	21.0	111.0	70.0	41.0	121.0	27.0	151.0	167.0	224.0	70.0	46.0	137.0	74.6	30.2	44.4	62.19	43.90				UC 214	
UCST 215-47	2 15/16																					ST 215	UC 215-47	15.8 7.2
UCST 215	75	1.25	0.81	4.38	2.75	1.63	4.75	1.06	5.94	6.56	9.13	2.75	1.88	5.50	3.0630	1.3110	1.7520	14,974	10,757				UC 215	
UCST 215-48	3	32.0	21.0	111.0	70.0	41.0	121.0	27.0	151.0	167.0	232.0	70.0	48.0	140.0	77.8	33.3	44.5	66.61	47.85				UC 215-48	